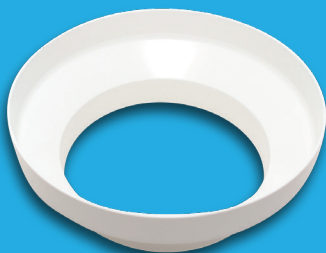


### Reducer



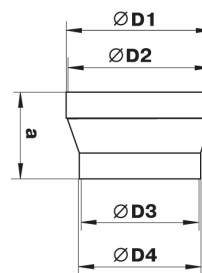
### Reducer

**Application**

- Reduces/increases duct size when installed in flexible duct.
- Connection of various air ducts.

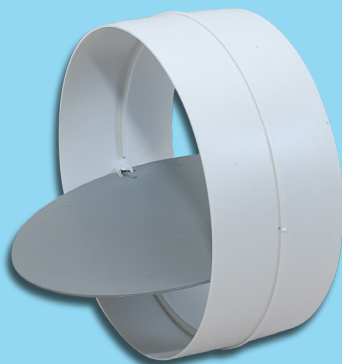
**Design**

- Made of white plastic.
- Connecting diameters: 100-125, 125-150, 150-200 mm.



ESC Code	a	D	D1	D2	D3	D4
VR100125	60	-	129	125	96	100
VR125150	60	-	154	150	121	125
VR150200	71	-	204	200	146	150

### Backdraft Damper



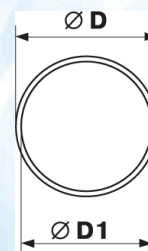
### Backdraft Damper

**Application**

- Supply and exhaust ventilation of various premises.
- Connection of same diameter air ducts.

**Design**

- Made of white plastic.
- Equipped with a backdraft damper for back flow prevention.
- Designed for direct installation into air duct and equipped with a lock ring.
- Connecting diameters: 100, 125 & 150mm.



ESC Code	a	D	D1
VBD100	62	96	100
VBD125	62	123	125
VBD150	62	148	150

### Duct Connector



### Duct Connector

**Application**

- Supply and exhaust ventilation of various premises.
- Connection of flexible round ducts.

**Design**

- Made of white PVC.
- Cover the connector with air duct and fix it with clamps.
- Connecting diameters: 100, 125 & 150mm.

ESC Code	a	D	D1
VDC100	60	100	103
VDC125	60	125	128
VDC150	60	150	153

### LED Lamp



### LED Lamp

**Application**

- Low voltage lighting for bathroom wet zones.
- Xstar lamp replacement.

**Design**

- 4 Chips.
- 5 Watt lamp.
- 12V, 6400K.
- Cool White/Warm White.

ESC Code:

KMR165W - Cool White

KMR165WWW - Warm White